



# WUXGA-1912 SD/SD+ WUXGA OLED Driver Board Datasheet

## Features and Benefits

### Multiple Video Inputs

- Dual HDMI
- Dual DVI

### OLED Brightness and Color Control

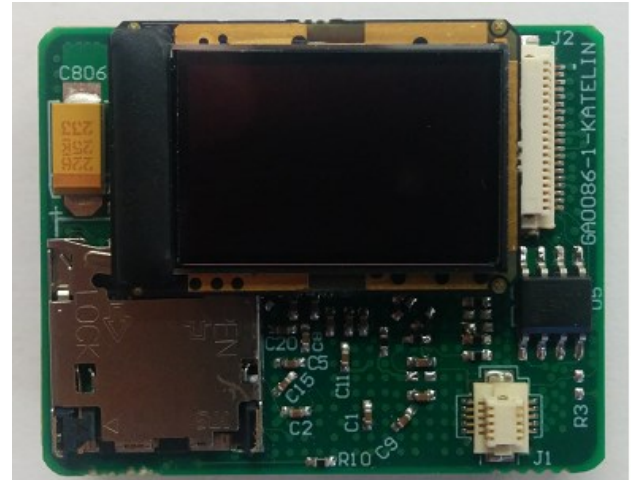
### Built in EDID

### Built-in DC/DC Power Conversion

### Powered using Micro USB Cable

### USB Calibration Software Via PC

### Compatibility: WLLV Wireless Video Products\*



## WUXGA OLED Driver

The WUXGA-1912SD OLED driver board for the eMagin WUXGA (1920x1200) High Definition OLED is designed for monocular, binocular and stereoscopic applications where each display engine must move independently and/or receive a different video signal.

With dual on board Micro HDMI connectors, the WUXGA-1912SD supports split screen both horizontal and vertical and other advanced video mode (available on the plus version). Custom video processing can be added based on your application requirements.

Video alignment is now easier because the video image can now be adjusted up to 150 pixel in all directions. Mounting tabs are available to aid with mounting and positioning. however if they are not required the mounting tabs can be removed.

The WUXGA-1912SD is also with a plus options which includes the following capabilities:

1. Image cropping and shifting
2. Content viewable Screen saver
3. Video Scaling, Picture-in-Picture, On Screen Display
4. Split Screens (top/bottom, left/right) , Alpha Blending

The WUXGA-1912SD driver is available with a micro controller to allow for custom applications features, such as the addition of dials, push buttons etc.

Our USB base PC application and configuration cable provides calibration adjustment for, color gain/offset, brightness, image orientation, firmware upgrades and other register values.

## Power Consumption

Input Voltage	3.5 – 5.5 V DC
Power Consumption	350mW (Depends on Configuration)

## Input Video Format

HDMI or DVI	1920 x 1200 @ 60Hz 1920 x 1080 @ 60Hz custom resolutions available
-------------	--

## EDID

Default	1920 x 1200 @ 60Hz
---------	--------------------

## Software Configuration

USB - PC Application	Control Brightness Gamma Updates Firmware Upgrades Auxiliary Input/Outputs
----------------------	---

## Mechanicals

Dimension (L x W )	1.2 x 1.5 inches
--------------------	------------------

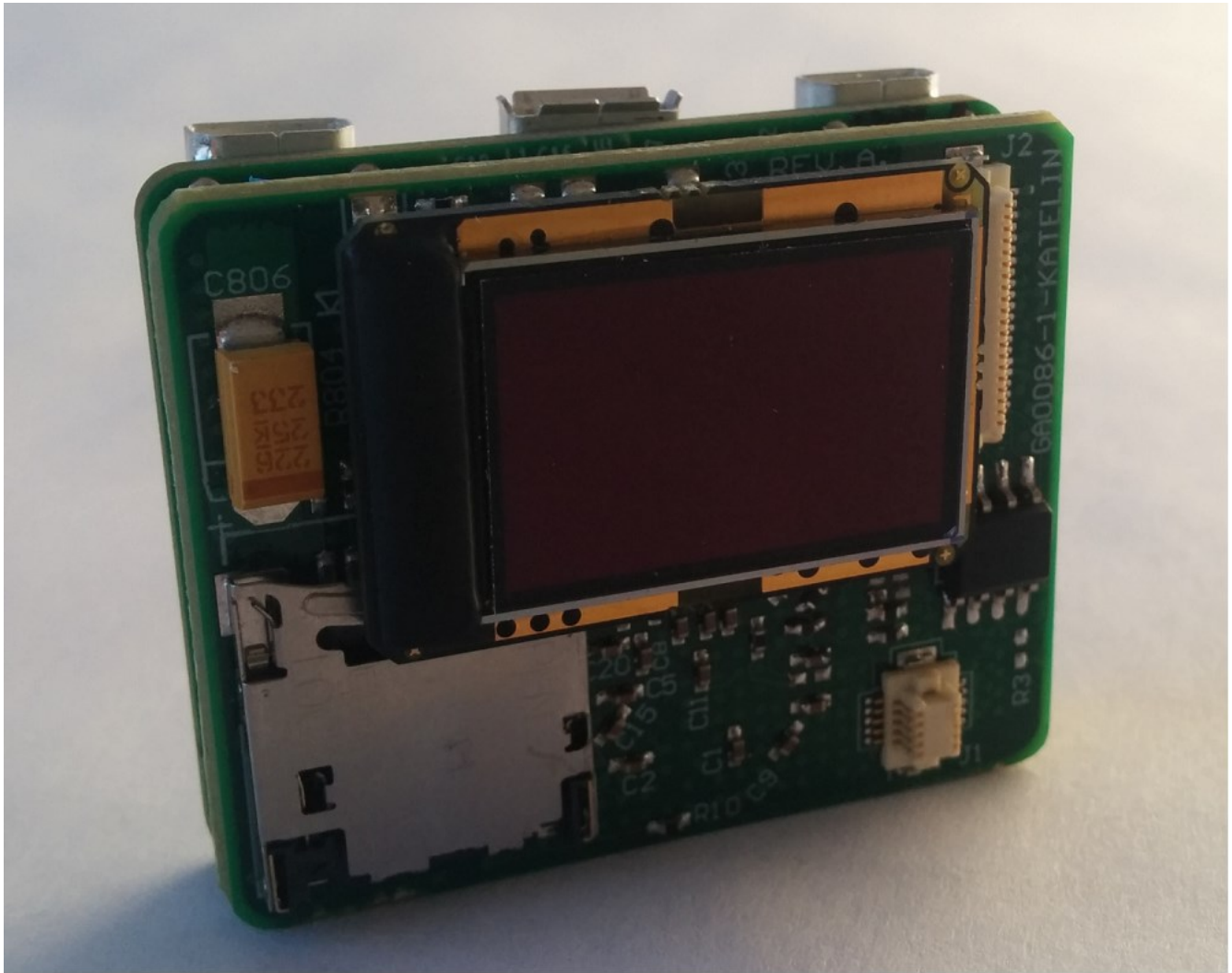
## Auxiliary Features

Additional Software Features via On board Micro-controller

[www.mradigital.com](http://www.mradigital.com) - [sales@mradigital.com](mailto:sales@mradigital.com) 443-224-8955

MRA Digital, LLC, All Rights Reserved. This document is for planning purposes only, and is not intended to modify or supplement any specifications or warranties relating to products of MRA Digital, LLC. MRA Digital may make changes to specifications and descriptions at any time without prior notice.

## Product Photo



## Wireless Low Latency Video (WLLV)

Wireless Low Latency Video – Make your OLED based product wireless by using MRA Digital wireless video technology. Transmitting up to 1080p with 10ms of latency at ranges over 100 meters with Wi-Fi and miles using microwave or Wi-Max. [Contact us](#) for more info.

## Ordering Information

Part Number	Description
WUXGA-1912SD	WUXGA OLED Driver
WUXGA-1912SD+	WUXGA OLED Driver with Video Processing
MUSB-PWR –Config	Micro USB Power and Configuration Cable

## Contact Information

Telephone	443-224-8955 / 240-447-8803
Email	<a href="mailto:sales@mradigital.com">sales@mradigital.com</a>
Web	<a href="http://www.mradigital.com">www.mradigital.com</a>

MRA Digital, LLC, All Rights Reserved. This document is for planning purposes only, and is not intended to modify or supplement any specifications or warranties relating to products of MRA Digital, LLC. MRA Digital may make changes to specifications and descriptions at any time without prior notice.