

SXGA 1015 DS Connection

MRA Digital, LLC

www.mradigital.com

info@mradigital.com

443-224-8955

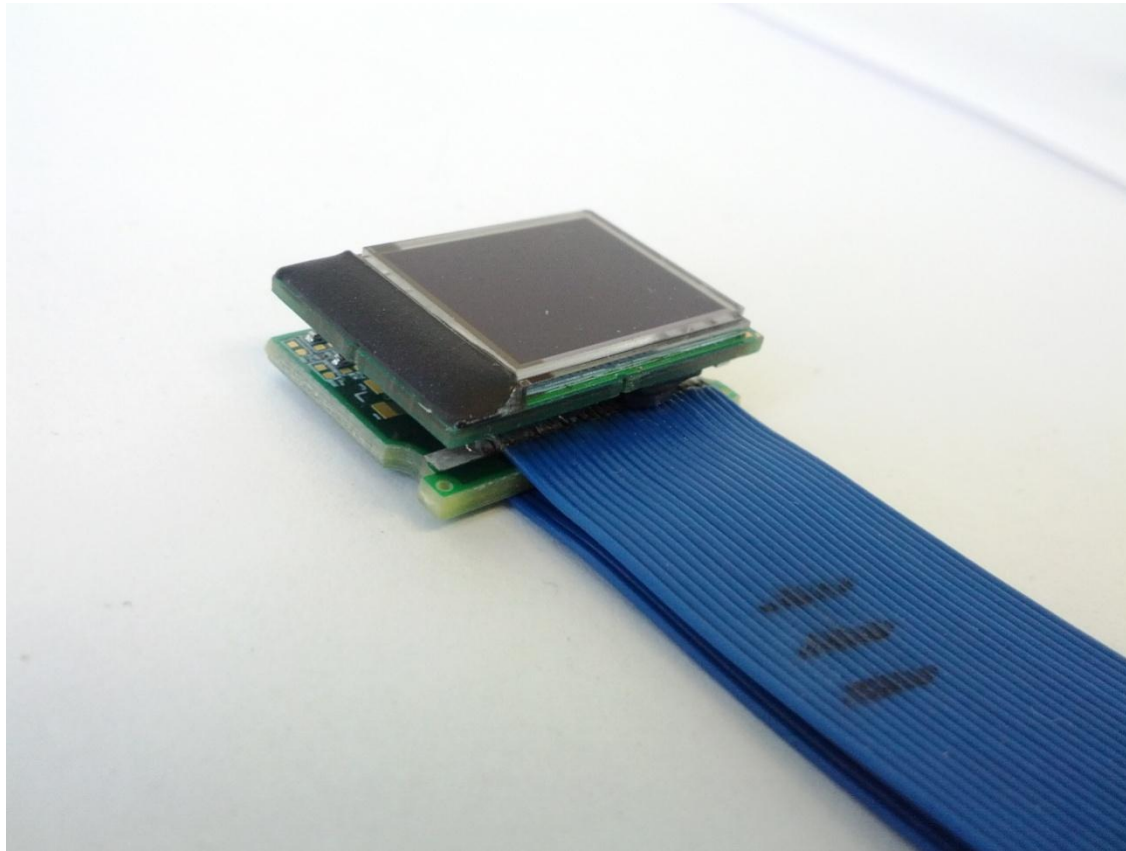
SXGA 1015-DS Driver Board

Cable Connection Guide

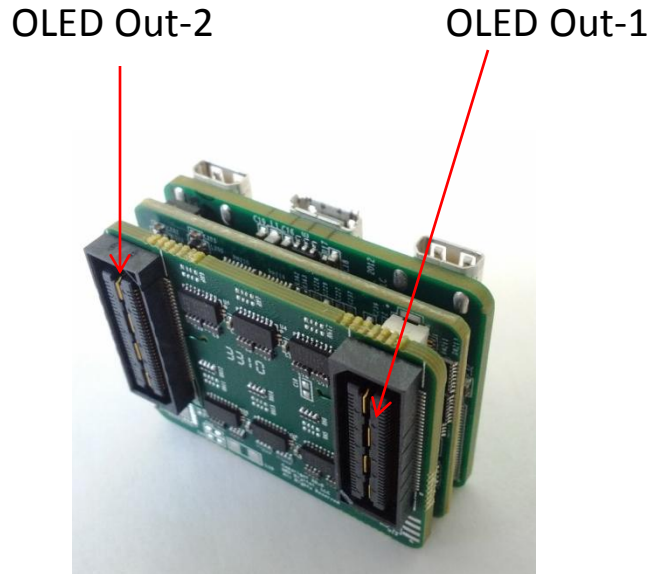
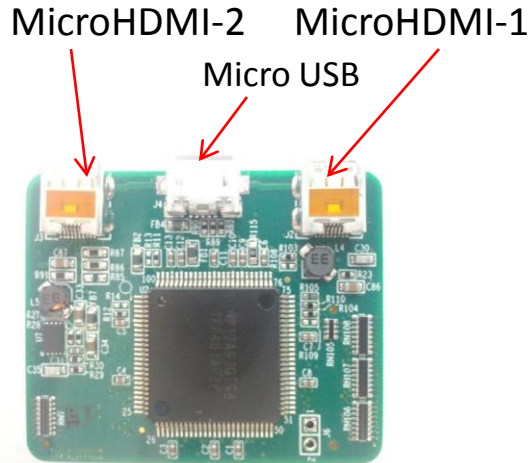
SXGA-1015-DS Cable Connection Guide

SXGA OLED Connection

1. The OLED connector is NOT keyed and thus it should be connected to the OLED Cable as shown in the photo.



SXGA-1015-DS Cable Connection Guide



HDMI and USB Cable Connections

1. Plug the HDMI cables into your PC or your video source.
2. The Micro HDMI end of the HDMI cables should be connected as denoted in the photo. Use MicroHDMI-1 input only if applying single video signal.
3. Be sure download and install the USB driver for the configuration cable from our website.
4. The Micro USB port is used both for configuration purposes and to power the board.
5. The OLED Out cables should be connected as denoted in the photo.

SXGA-1015-DS Cable Connection Guide

Power Cable Connections

- 1. The SXGA 1015 Driver can be powered using +5.0v DC
- 2. Connect USB end of the cable to USB PC connector.
- 3. The Micro USB end of the cable should be connected as denoted in the photo
- 4. The USB cable, marked as “CONFIG” can be used with the e-Magin configuration software. (Attention: It does not provide power to Driver and should be used along with Power cable).



SXGA-1015-DS Cable Connection Guide

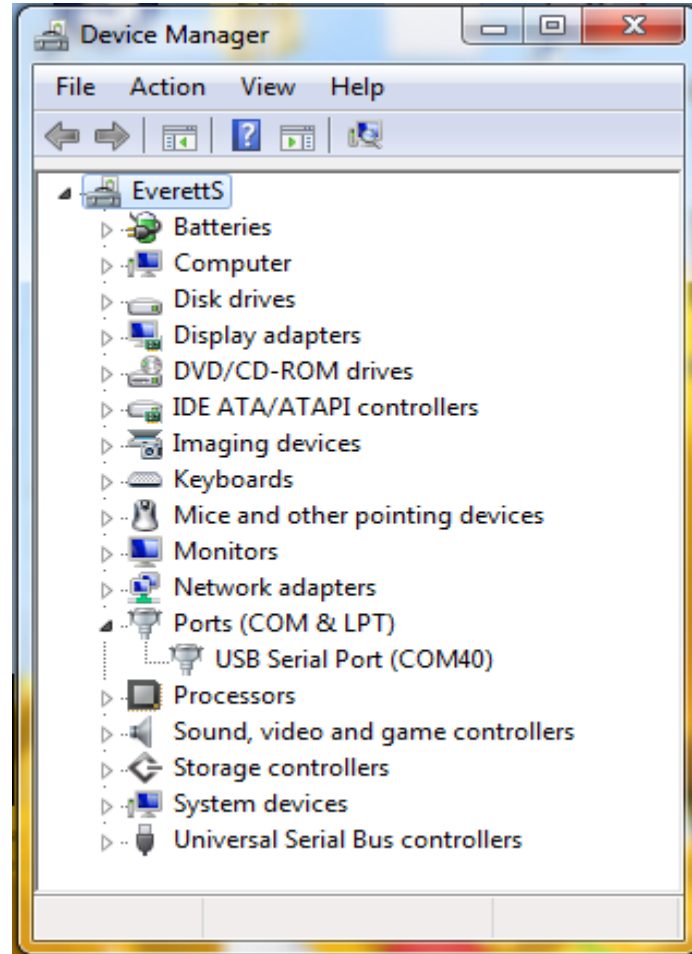
1. Once the USB driver is installed, a virtual COM port will be installed on your PC. This configuration software uses the virtual COM port to communicate with the SXGA Driver board.

2. To find the virtual COM port number go to the Device Manager window and then expand the Port(COM &LPT) option. In the photo shown the virtual COM port number is 4. The COM port number will stay the same as long as you are using the same configuration cable.

3. The Virtual COM port number MUST be used when starting up the configuration software or upgrading the firmware within the Driver Board.

Working With the USB Config Cable

Click Here to Download USB Driver



SXGA-1015-DS Cable Connection Guide

- **Power Up Sequence**

- 1. There is no particular power up sequence, but a few examples are as follows:

- **Ex1. With PC on**

- a. Connect HDMI cable to Video Source and to the Driver board
- b. The PC may make a noise which indicates that a new monitor has been connected
- c. This can be verified by going to the monitor properties window
- b. If needed connector USB cable to PC and to the Driver Board
- c. Turn on Power to the Driver Board
- d. An image will be displayed on the OLED

- **Ex2. With PC off**

- a. Connect HDMI cable to Video Source and to the Driver board
- b. If needed connector USB cable to PC and to the Driver Board
- c. Turn on Power to the Driver Board
- d. Turn on Power to the PC
- e. The LED on the driver board will flash rapidly until a valid video signal is received.
- f. Log into your PC
- g. An image will be displayed on the OLED

- MRA Digital- www.mradigital.com